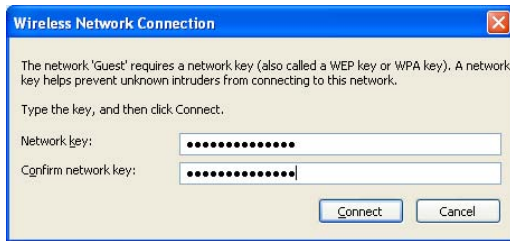


How to get online...

1. Ensure your wireless enabled laptop or PDA/phone is turned on and has its wireless signal/switch activated.
2. Go to the available **Wireless Network Connection List**, as displayed on your laptop/PDA/phone.
3. Click on **Patient** and then click on the **Connect** button. Enter the **WPA key** when prompted and then click **Connect**. The WPA key is **ramsaypatient**. Validate that you have connected to the WiFi@Ramsay wireless network.



4. Open your **Internet Browser**.

The WiFi@Ramsay login page will appear after a short time, as per sample screen below;



5. Review the Usage Policy and Terms and Conditions and tick the box to accept the terms of use.

6. Enter the logon details as provided on the WiFi@Ramsay Access Card (password is case sensitive).
7. Click on the **Go** button to proceed to the internet.

WiFi FAQs

What is wireless internet?

Wireless internet, WiFi and WLAN all refer to a networking technology that uses radio frequency instead of physical wire to allow you to connect to the internet when you're in a wireless hotspot location.

How do I know if my laptop/device is wireless?

Wireless laptops and PDAs have a wireless icon displayed on them, such as an Intel@ Centrino™ Mobile Technology logo. If your device doesn't have wireless built-in, you can buy a separate wireless card from any major electronics store.

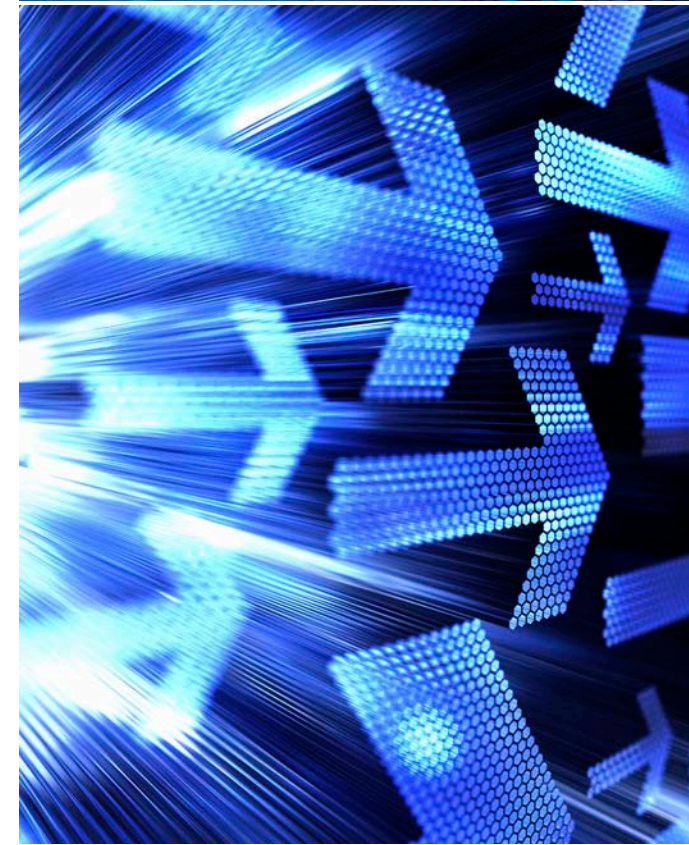
How secure is it?

Ramsay Health Care uses stringent and monitored multi-layer Firewall/Security technology to ensure only valid network traffic is delivered to and from this internet connection. Ramsay Health Care does recommend that when using the WiFi internet you ensure you have a robust and current Anti-Virus software as well as personal firewalls installed on your PC.

What are the terms and conditions?

The terms and conditions for use of the WiFi@Ramsay internet access can be found on the landing page when you connect.

www.ramsayhealth.com.au



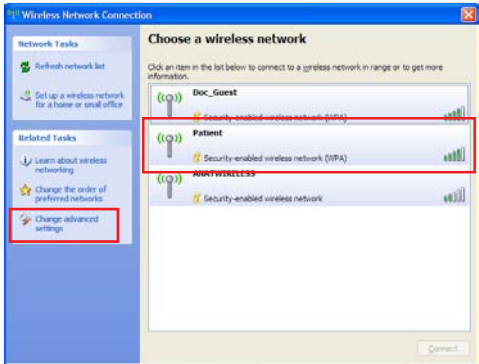
WiFi@Ramsay

Need more help setting up...

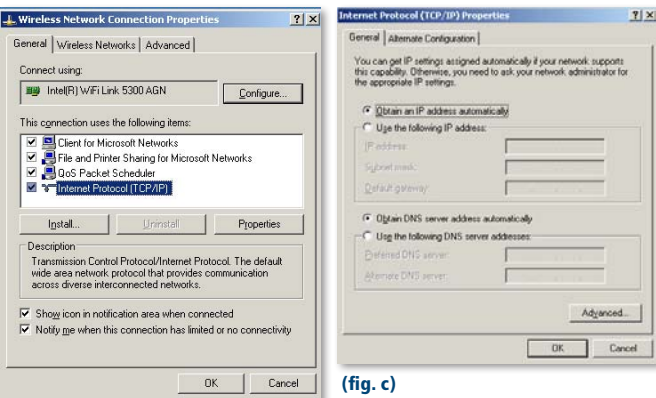


Windows XP

1. Go to **Start, Control Panel** then **Network Connections**. Select **Wireless Network Connection**, and click to **View available wireless networks** under Network Tasks.
2. Highlight **Patient** in the Choose a wireless network section (fig. a). If no wireless networks are displayed, ensure your wireless switch is on and/or wireless network list is refreshed. Click on **Change advanced settings** (fig. a).
3. On the **General** tab, highlight **Internet Protocol (TCP/IP)** option (fig. b) and click on **Properties**.
4. Select **Obtain an IP address automatically** and **Obtain DNS server address automatically** as (fig. c). Then select **OK**.



(fig. a)



(fig. b)

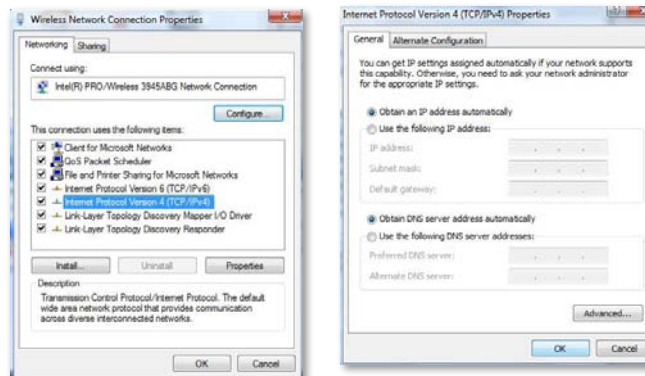
(fig. c)

Windows Vista

1. Go to **Start, Control Panel** then **Network and Sharing Center**. Go to **Manage Wireless Networks** on the left of the screen.
2. Make sure **Patient** is positioned on the top of the list by moving it up if needed (fig. d). If no wireless networks are displayed, ensure your wireless switch is on. Close the **Manage Wireless Networks** screen.
3. Go to **Manage Network Connections** on the **Network and Sharing Center** page. Right-click on **Wireless Network Connection** and click on **Properties**, click **Continue** if displayed. Highlight the **Internet Protocol Version 4** option (fig. e) and click on **Properties**.
4. Select **Obtain an IP address automatically** and **Obtain DNS server address automatically** as (fig. f). Then select **OK**.



(fig. d)



(fig. e)

(fig. f)

Windows XP & Windows Vista

5. Lastly, to configure Microsoft® Internet Explorer, open your web browser and go to **Tools**. Select **Internet Options** and the tab **Connections**. Under LAN settings, open the window for Local Area Network (LAN) settings.
Ensure the following options are NOT selected.
 - Automatically detect settings
 - Use automatic configuration script
 - Use a proxy server for your LANThen select **OK**. If you have had to change any settings during this configuration process, please restart your laptop.
6. Open another browser window. The WiFi@Ramsay landing page should now appear.

Mac Users

Mac OSX Operating System

1. Click on the AirPort icons in the toolbar and select **Turn AirPort On**.
2. Select **Patient** from the list of available wireless networks (fig. g).
3. Open your internet browser and you will reach the WiFi@Ramsay landing page (fig. h).



(fig. g)



(fig. h)